



Schweizerische Eidgenossenschaft  
Confédération suisse  
Confederazione Svizzera  
Confederaziun svizra

Swiss Confederation

**Innosuisse – Swiss Innovation Agency**

# SNSF & INNOSUISSE FUNDING SCHEME EVENT

16 October 2024

Please note that these presentations are only summaries. In case of doubt, please refer to the relevant regulations published on our websites.

# Programme Presentations

Schedule	Subjects
09:00 – 09:10	Welcome speech
09:10 – 09:35	Innosuisse Instrument – National projects
09:35 – 10:00	Scientific Exchanges
10:00 – 10:25	SPIRIT

# Programme

## Q&A sessions

Links available here  
[SNSF & Innosuisse funding scheme events \(snf.ch\)](https://www.snf.ch)

Schedule	Subjects and links for the Q&A sessions
10:30 – 11:15	<a href="#">Innosuisse Instrument – National projects</a> ↗
	<a href="#">Scientific Exchanges</a> ↗
	<a href="#">SPIRIT</a> ↗
	<a href="#">BRIDGE</a> ↗
	<a href="#">Supplementary measures</a> ↗
	<a href="#">COST</a> ↗

# Informations about the presentations

- Both your microphone and camera are switched off. You see the presentation and video of the person speaking.
- If you're experiencing technical problems, you can contact us using the chat function.
- The presentations are recorded (only the slides and the voice/video of the speakers).
- The slides and recordings of all presentations will be available on our website in the days after each event.
- Immediately after each presentation, we will only be able to take a very limited number of questions. Use the chat!
- For further questions, please use the **Q&A session** for the scheme you are interested in. These sessions will take place after the last presentation. You'll find all the links on our website.

# Horizons – The Swiss Research Magazine

Latest developments in  
**science and research policy**

Published by the **SNSF** and  
the **Swiss Academies of Arts  
and Sciences**

Publication: **Four times** a year  
(March, June, September,  
December)

**Printed** version:  
German & French

Editors are **independent**

**Free** magazine

**Online** version:  
German, French &  
English

# Horizons – Recent topics



**A flying start in the private sector**



**Evaluating the evaluation**



**The tourism of the future**

# Where can you find Horizons?



Online version (English: <https://www.horizons-mag.ch/>)



Subscription (<https://www.horizons-mag.ch/subscribe/>)



[Horizons Magazine \(@horizons\\_en\) / X \(twitter.com\)](https://twitter.com/horizons_en)



[Horizons Magazine \(@horizons\\_mag\)](https://www.instagram.com/horizons_mag)

# MOVING THE WORLD WITH SWISS INNOVATION

Thomas Martignier

Associate Scientific Officer Life Sciences

16.10.2024



Schweizerische Eidgenossenschaft  
Confédération suisse  
Confederazione Svizzera  
Confederaziun svizra

Swiss Confederation

**Innosuisse – Swiss Innovation Agency**



# INNOSUISSE SWISS INNOVATION AGENCY

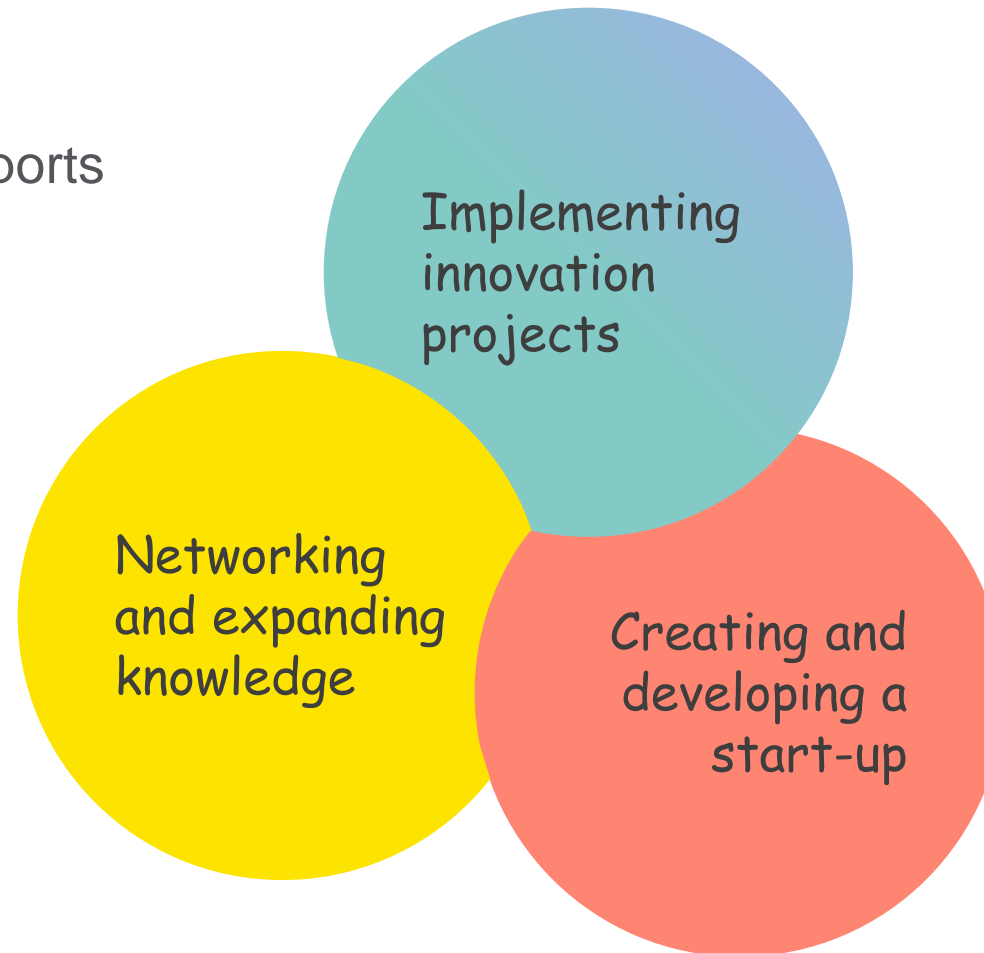
Innosuisse is the Swiss Confederation's agency for promoting innovation.

## OUR MANDATE

Innosuisse promotes **science-based innovation in the interest of the economy and society** in Switzerland – in all disciplines.

# INNOSUISSE – YOUR PARTNER FOR INNOVATION

How Innosuisse supports  
your science-based  
innovation:



# WHAT INNOSUISSE OFFERS FOR RESEARCHERS

## Implementing innovation projects

INNOVATION PROJECTS

FLAGSHIP INITIATIVE

INNOVATION PROJECTS WITHOUT IMPLEMENTATION PARTNER

BRIDGE FUNDING OFFER BY INNOSUISSE AND SNSF

INTERNATIONAL INNOVATION PROGRAMMES

BILATERAL COOPERATION

## Networking and transferring knowledge

ENTERPRISE EUROPE NETWORK

INNOVATION BOOSTER

## Creating and developing a start-up

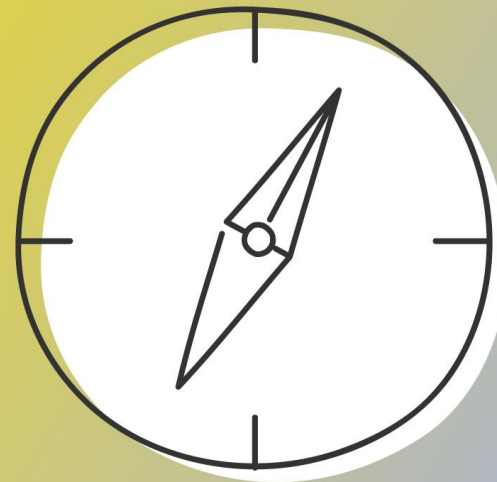
START-UP TRAINING

START-UP INITIAL COACHING

# THE INNOSUISSE GUIDE HELPS YOU FIND THE RIGHT SUPPORT OFFER IN JUST A FEW STEPS

**Navigation  
for your  
innovation**

[www.innosuisse.guide](http://www.innosuisse.guide)



# IMPLEMENTING INNOVATION PROJECTS

WITH RESEARCH AND  
BUSINESS PARTNERS  
IN SWITZERLAND

# INNOVATION PROJECT BETWEEN COMPANIES AND RESEARCH INSTITUTES

INNOVATION PROJECTS

## IMPLEMENTATION PARTNER (industry partner, SME, NGO, administration)

- Wants to develop innovative products, services or processes with the help of a Swiss research institute

## RESEARCH INSTITUTE

- Provides scientific skills and research infrastructure

## INNOVATION PROJECT

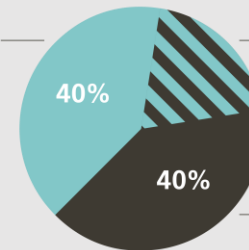
**Duration:** no limit, usually 6 to 36 months

**Project costs:** amount unlimited

**Own contribution:** 40–60% of the total costs

**Cash contribution:** 5% of the total costs

Funded by Innosuisse



**Flexible bandwidth:** by Innosuisse and/or implementation partner

Contribution by the implementation partner incl. 5% cash contribution

## MARKET IMPLEMENTATION OF INNOVATION



Submit an application:

<https://www.innosuisse.ch/application>

# IMPLEMENTING INNOVATION PROJECTS

ALONE AS  
A RESEARCHER

# INNOVATION PROJECT WITHOUT AN IMPLEMENTATION PARTNER

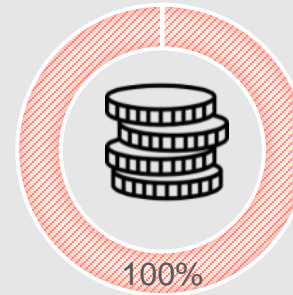
PROJECTS WITHOUT  
IMPLEMENTATION PARTNER

## RESEARCHERS

- who, during their research work, have come across an innovative idea with great market potential;
- who have not yet found a partner for implementation on the market;
- You can apply for financial support for feasibility studies, prototypes and testing facilities – especially for high-risk projects with strong innovation potential.

## INNOVATION PROJECT

Duration: Max. 18 months



■ Funded by Innosuisse

## FUTURE MARKET IMPLEMENTATION OF INNOVATION



Submit your application online:  
<https://www.innosuisse.ch/application>



# A GOOD INNOVATION PROJECT & EVALUATION PROCESS

# FOR AN INNOVATION PROJECT A GOOD APPLICATION IS...

## CONCRETE:

- Market interest exists
- Access to the market has been described
- Product or service has been defined

## CLEAR:

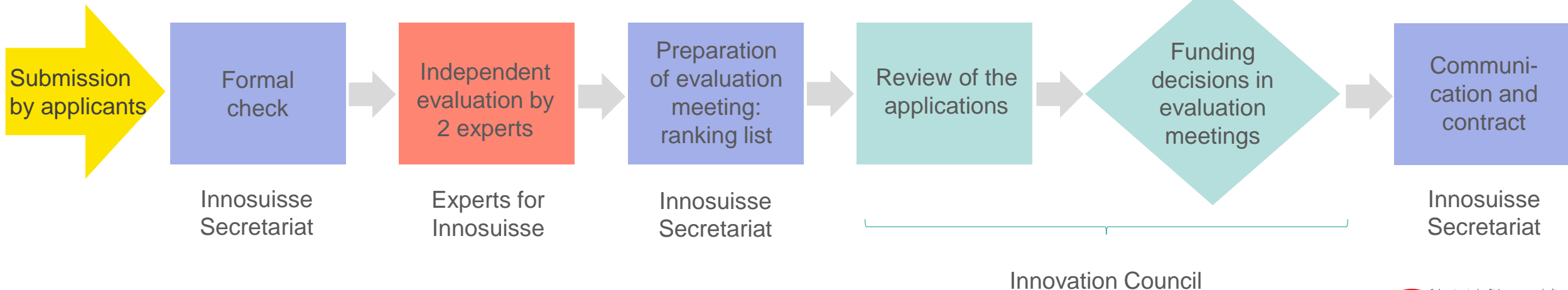
- Innovative content is clearly indicated
- Project plan is comprehensible
- Tasks are clearly defined and meaningful
- Milestones are set reasonably and goals are described quantitatively

## CONSISTENT:

- Research and implementation partners work together, not side by side or against each other
- Project planning and financial planning are consistent
- Timetable and resource allocation are realistic

# INNOVATION PROJECTS EVALUATION PROCESS

Evaluation duration (in weeks) – depending on [dates of evaluation meetings](#)



# INNOVATION PROJECTS ASSESSMENT CRITERIA

## TWO INDEPENDENT EVALUATIONS

with the same weighting

Evaluation expert 1

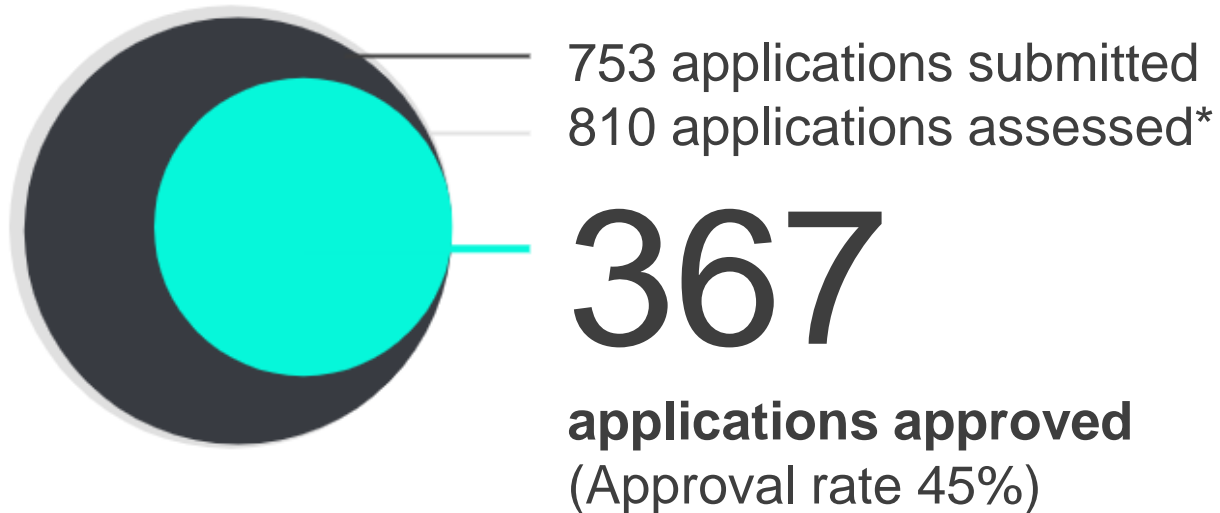
Evaluation expert 2

## ASSESSMENT CRITERIA

- ✓ Innovation degree
- ✓ Sustainability and value creation in Switzerland
- ✓ Methodology and team competences

The Innovation Council makes the assessment and takes its independent decision on the basis of the experts' evaluation

# FACTS AND FIGURES 2023: INNOVATION PROJECTS



## 2022

896 applications submitted  
834 applications assessed  
374 applications approved

## 2021

887 applications submitted  
857 applications assessed  
438 applications approved

## 2020

783 applications submitted  
858 applications assessed  
472 applications approved

\* As a rule, applications submitted in December cannot be assessed until the following year. There may therefore be differences between the number of submitted and assessed applications within one year.

# YOUR CONTACTS FOR INNOVATION PROJECTS



## LIFE SCIENCES

Thomas Martignier

+41 58 464 19 85

[life.sciences@innosuisse.ch](mailto:life.sciences@innosuisse.ch)



## ENGINEERING

Matthias Furler

+41 58 462 81 47

[engineering@innosuisse.ch](mailto:engineering@innosuisse.ch)



## SOCIAL SCIENCES & BUSINESS MANAGEMENT

Sandra Villiger

+41 58 463 51 60

[social.sciences@innosuisse.ch](mailto:social.sciences@innosuisse.ch)



## ENERGY & ENVIRONMENT

Nicolas Martin

+41 58 465 33 72

[energy.environment@innosuisse.ch](mailto:energy.environment@innosuisse.ch)



## ICT

Sybille Aeschbacher

+41 58 467 17 55

[ict@innosuisse.ch](mailto:ict@innosuisse.ch)



## INNOVATION CHEQUES

Fabienne Burkhalter

+41 58 481 44 60

[innocheque@innosuisse.ch](mailto:innocheque@innosuisse.ch)

MOVING THE WORLD WITH INNOSUISSE

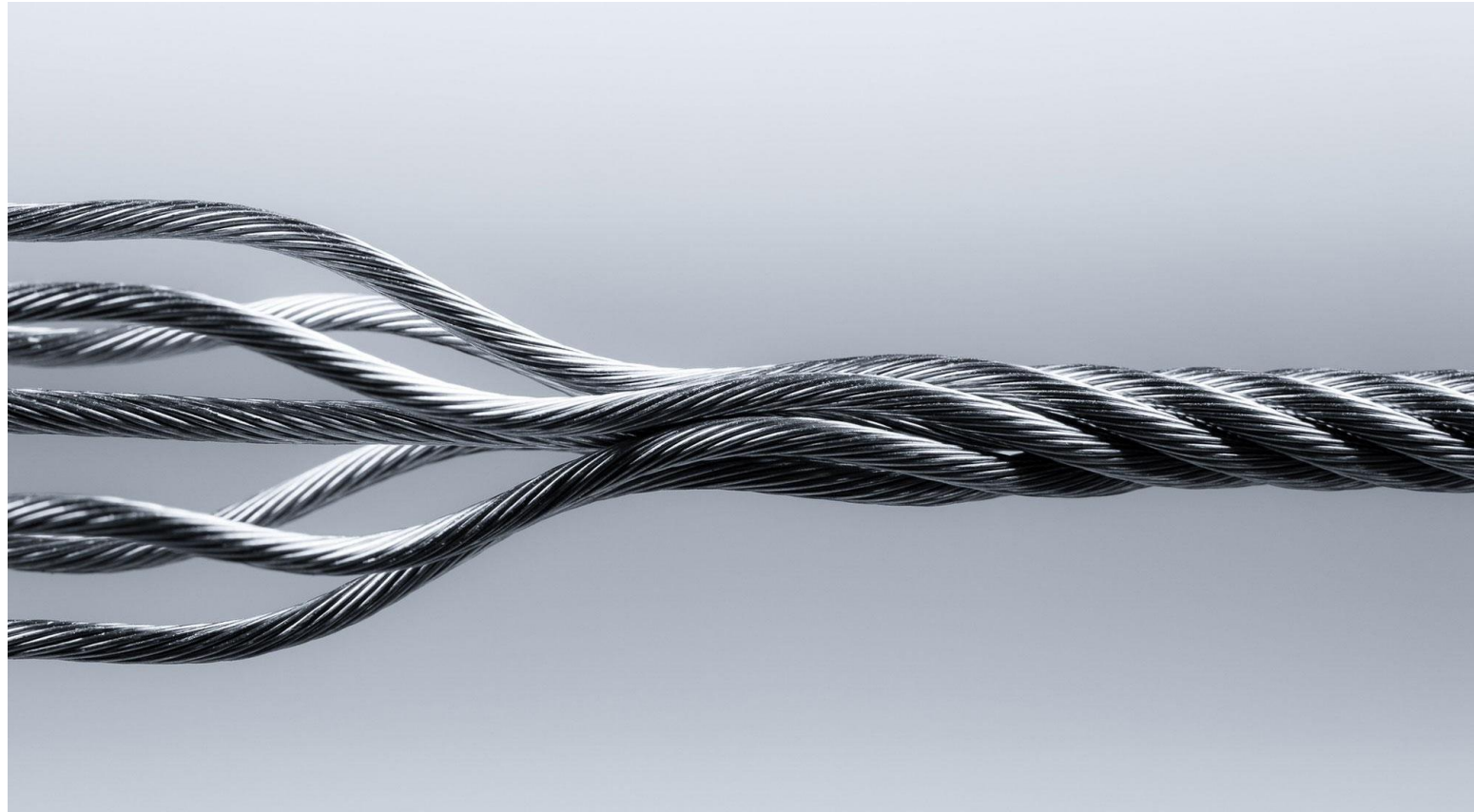


THANK YOU

[www.innosuisse.ch](http://www.innosuisse.ch)  
[info@innosuisse.ch](mailto:info@innosuisse.ch)

MOVING THE WORLD  
WITH SWISS INNOVATION





# SCIENTIFIC EXCHANGES

16 October 2024

Arthur Friedli  
Scientific Officer  
International Cooperation



# WHAT IS THE SCIENTIFIC EXCHANGES FUNDING SCHEME?

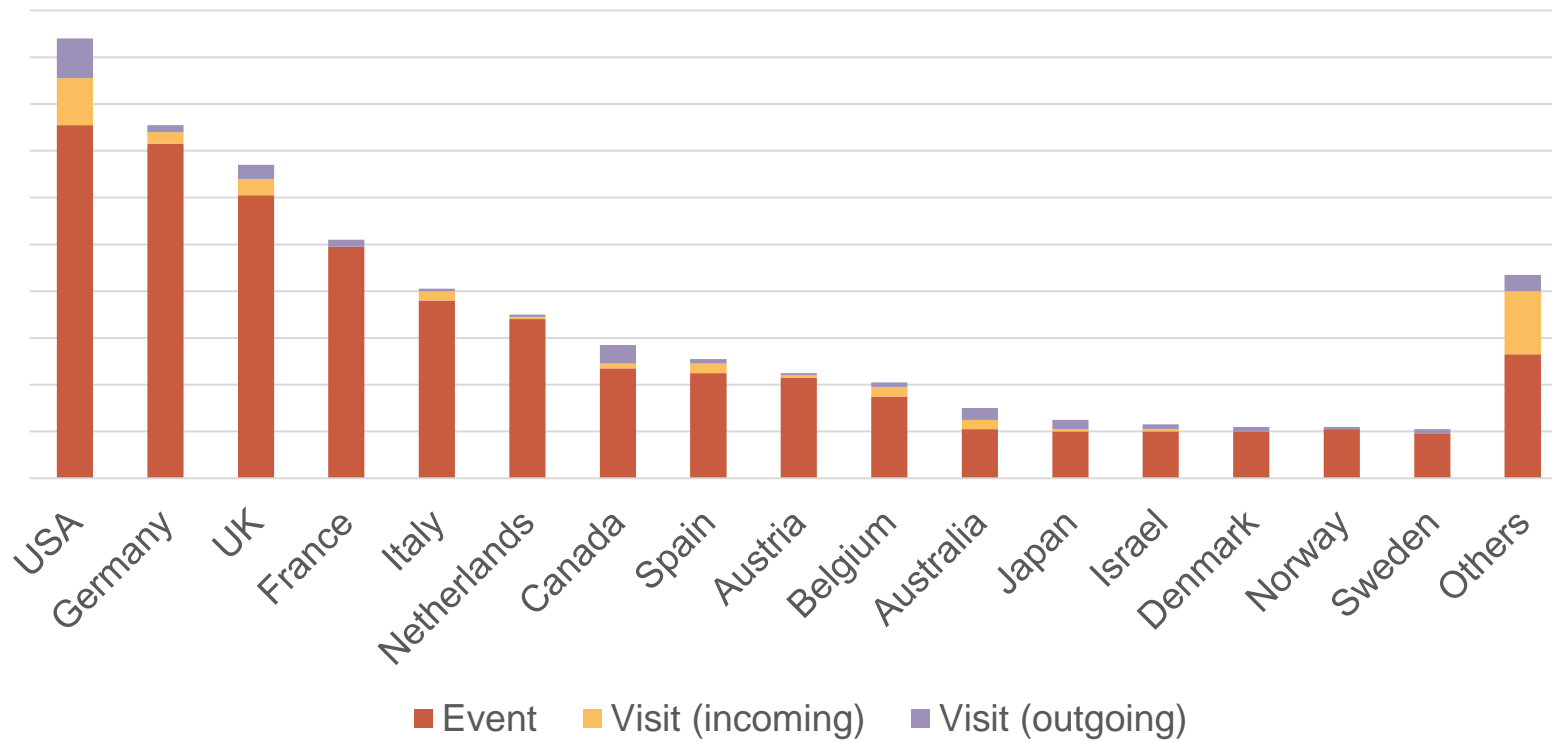
The SNSF supports two formats of Scientific Exchanges (SEs):

- Research visits
- Scientific events (conferences, workshops and similar events)

The SNSF receives about 400-500 SE applications per year; 2/3 are for events, 1/3 is for visits.

# Countries

SE proposals 2023 by country



Altogether, SE proposals included researchers from 77 countries in 2023

# APPLICATION PROCESS AND ASSESSMENT

- Applications must be submitted between 4-18 months before the beginning of the visit/event
- The evaluation takes up to 3 months
- SEs are assessed by two scientific officers at the SNSF, who conduct a so-called 'plausibility check'.

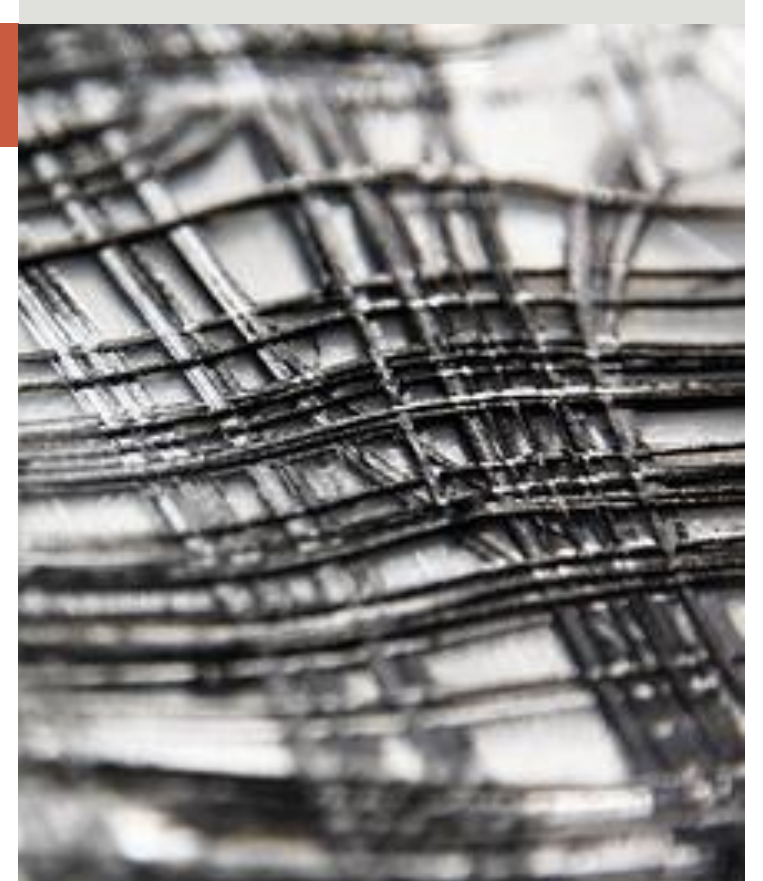


© Leander Diener

# SCIENTIFIC EVENTS

## Format and eligibility criteria

- Events organised in Switzerland (justified exceptions possible), convening (mainly) researchers from Switzerland and abroad
- Purpose: exchange of knowledge and ideas; events aimed at education/training are not eligible
- Duration: 1-5 days
- Applicants must have a position at a Swiss research institution; early-career researchers without a PhD are eligible
- Funded participants must add to the content of, and derive a scientific benefit from, the event
- Only participants from abroad can be supported



© Hyunchul Kwon

# SCIENTIFIC EVENTS

## Eligible costs

Grant maximum defined by the duration of an event (CHF2'500 per half-day):

- ✓ Travel costs for funded participants
- ✓ Accommodation and meals for funded participants; up to CHF200 per overnight stay
- ✓ Costs for online/hybrid events (equipment and support)
- ✓ Support for participants with childcare duties (travel costs and childcare allowance); this does not count towards the grant maximum mentioned above

# SCIENTIFIC EVENTS

## Assessment

For the plausibility check, the following criteria are checked:

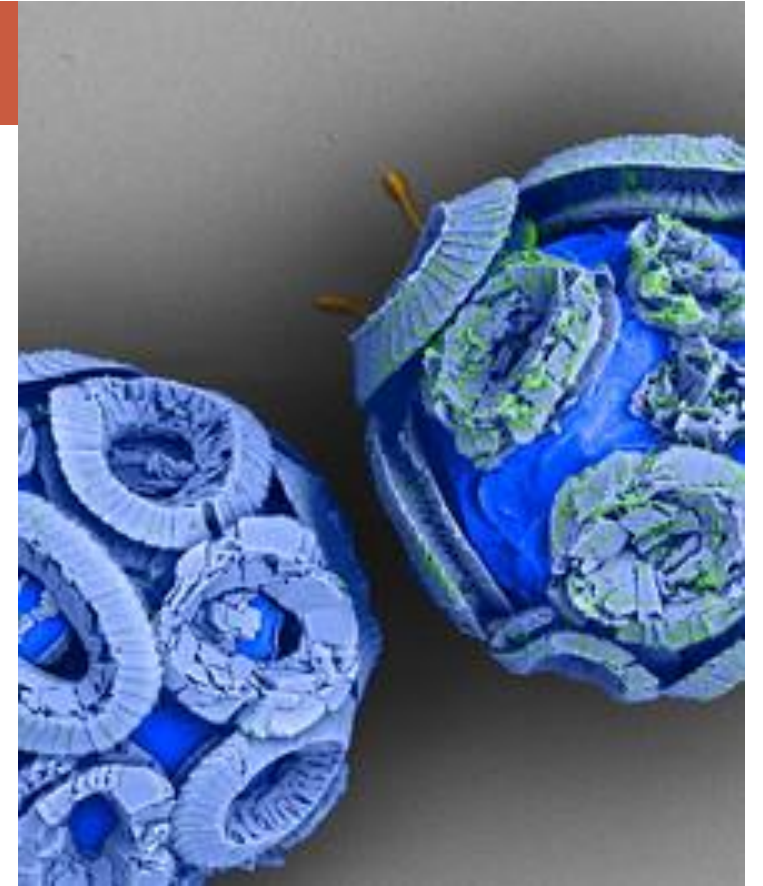
- Expertise and scientific qualification of the funded participants
- Relevance and originality of the exchange
- Mutual scientific benefits/added value
- Feasibility

**→ All of this is checked against the aims, format and overall rationale of the event**

# RESEARCH VISITS

## Format and eligibility criteria

- Visits by the Swiss applicant to a host abroad, or by a guest from abroad to Switzerland
- Purpose: joint research activities, mainly in project format
- Duration: 1-6 months
- Applicants must have a PhD and a position at a Swiss research institution for at least six months beyond the end of the visit
- Both guest and host must derive a scientific benefit from the visit



© Sophie Zweifel

# RESEARCH VISITS

## Eligible costs

- ✓ Travel costs for one round trip
- ✓ Monthly flat rate for living expenses; generally, up to CHF 3'000, but can be up to CHF 3'500 in lower-income countries (as defined by OECD)
- ✓ Support for participants with childcare duties (travel costs and childcare allowance)
- ✗ Not included: research costs, salaries



# RESEARCH VISITS

## Assessment

Same criteria as for the events: expertise, relevance, added value, feasibility

Examples of questions that we ask:

- Is the visit dedicated to collaborative research?
- Do both host and guest derive a scientific benefit from the visit?
- Is the planned research reasonably self-contained, does it have a purpose in and of itself?

# A FEW LAST RULES...

## Overlap

- Scientific Exchanges can be applied for and run in parallel to other SNSF funding, but scientific overlaps must be avoided

## Events & Visits

- Scientific events and research visits can be applied for and run in parallel to each other...
- but no more than one application of the same type (event or visit) can be funded per individual per year, i.e. there must be at least 12 months between the end of one exchange and the start of a new one of the same type

## Management

- Once granted, Scientific Exchanges can be postponed, if there are no substantial changes to the content
- Always contact the Office

# Thank you!

 [x.com/snsf\\_ch](https://x.com/snsf_ch)

 [Linkedin.com/company/snsf](https://www.linkedin.com/company/snsf)

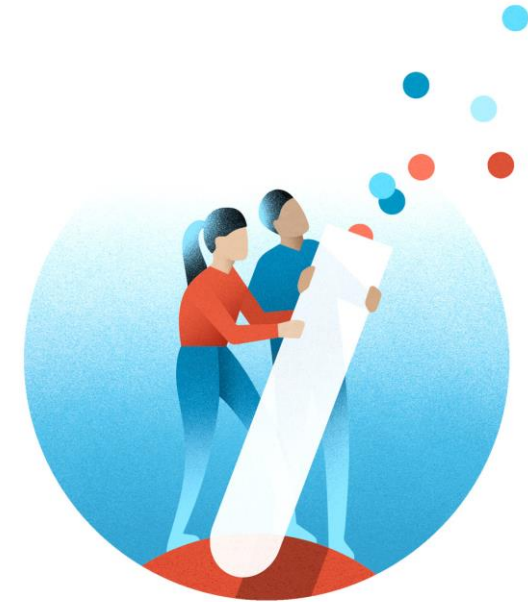
 [Instagram.com/swissnationalsciencefoundation](https://www.instagram.com/swissnationalsciencefoundation)

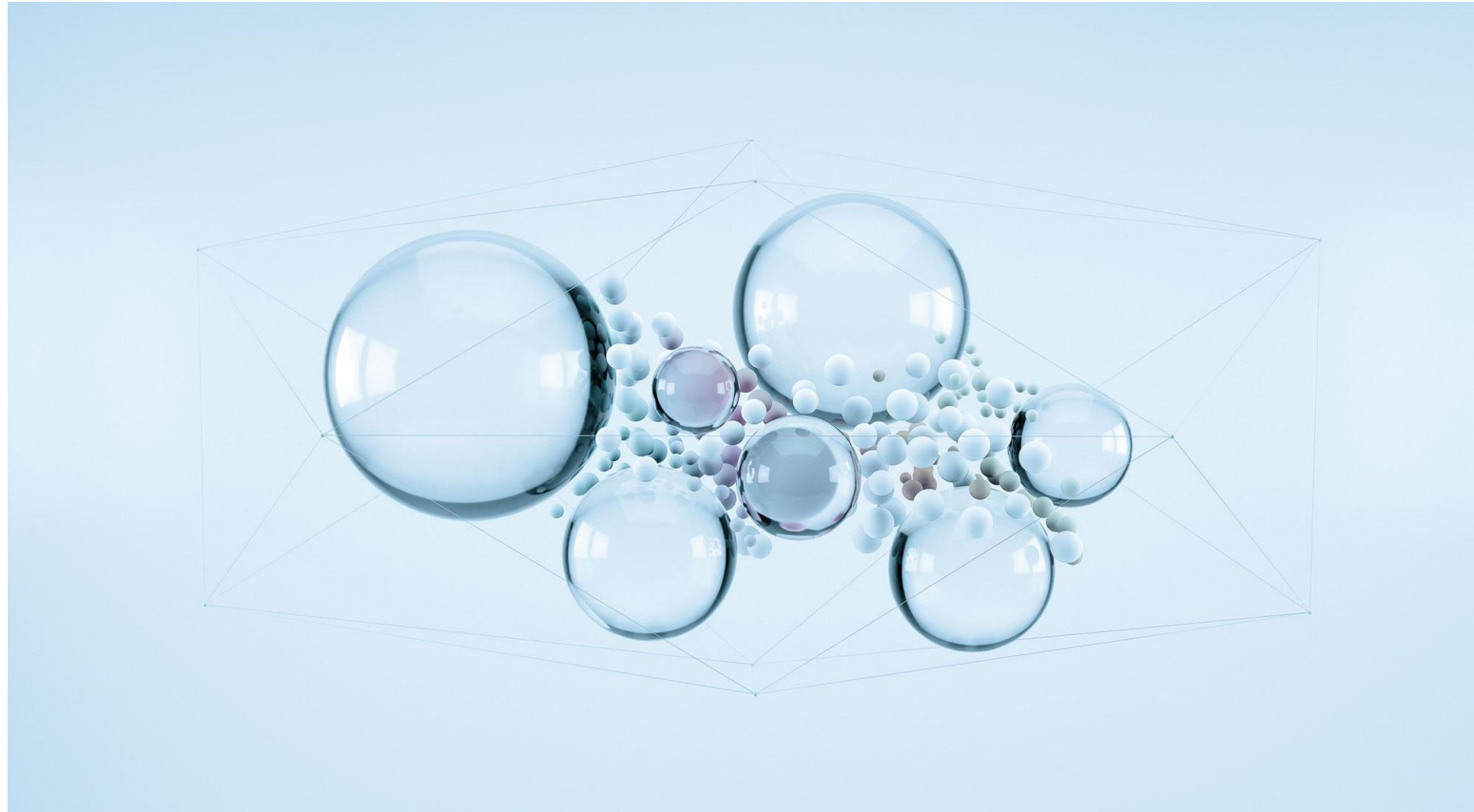
 [Youtube.com/SNSFinfo](https://www.youtube.com/SNSFinfo)

Check out our website: [Scientific Exchanges](https://www.scientificexchanges.ch)

Visit the SNSF Data Portal: [data.snf.ch](https://data.snf.ch)!

You can contact the Scientific Exchanges team at [scientific.exchanges@snf.ch](mailto:scientific.exchanges@snf.ch)





# SPIRIT

16 October 2024

Matt Kimmich  
Scientific Collaborator  
International Cooperation

# What is SPIRIT?

- **S**wiss **P**rogramme for **I**nternational **R**esearch by **S**cientific **I**nteraction **T**eams
- SPIRIT fosters cross-border collaboration without disciplinary restrictions
- The funding scheme provides opportunities for researchers in Switzerland to collaborate with partners in countries receiving overseas development aid...
- ... but the focus of SPIRIT is not research as/for development
- It contributes to the increase of research capacity in Switzerland and abroad
- It promotes gender awareness and equal opportunities, in Switzerland and in the partner countries
  
- SPIRIT runs one annual call, which launches in August and closes in November
- Projects can begin after the evaluation has concluded, which is generally in June/July

# Format of SPIRIT projects

- Collaborative projects between researchers in Switzerland and researchers in partner countries
- The main aim is scientific excellence
- No disciplinary or thematic restrictions
- Project duration: 2-4 years
- Max. budget per project: CHF 500'000
- Eligible costs: salaries (but not of applicants), material costs linked to the research, infrastructure costs, organisation of conferences/workshops, networking activities
- Around 12 projects can be funded each year

# SPIRIT evaluation criteria

- Scientific relevance
- Originality of the aims and objectives
- Suitability of the methodology, feasibility
- Track record and expertise of the researchers
- Complementarity of the research partners
- **Contribution to increasing scientific capacities in the relevant research field**
- **Contribution towards raising gender awareness and promoting equal opportunities**

(The latter two criteria aren't weighted differently, but they are specific to SPIRIT.)

# SPIRIT and gender awareness

Gender awareness is assessed in two dimensions:

- Research content:
  - Applicants must reflect on how sex/gender may play a role and address this in the project
  - If there is no sex/gender perspective, applicants must give a plausible justification
- Project team:
  - Inclusion of female researchers or plausible justification for not doing so
  - Inclusion of a gender-sensitive recruitment plan and a mentoring plan for female researchers
  - Planning of gender awareness-raising workshops
  - Note: This applies especially but not exclusively to male-dominated fields of research



# SPIRIT: other things to keep in mind

- Make sure to check the list of eligible countries on the SPIRIT webpage!
- Of the overall budget, at least 30% must be allocated to the Swiss partners and at least 30% must be allocated to the partners abroad; the remainder can be allocated as makes most sense for the project
- Applicants must show awareness of the challenges of international collaboration in general and collaboration with their partner countries in particular – in practical terms as well as in ethical terms
  - Transparency
  - Accountability
  - Co-governance
  - Common understanding of ownership, access, benefit and consent
- If gender genuinely plays no part in the research planned for a project, and the proposal makes a convincing case for this, the proposal can receive a good rating for the criterion

# Thank you!

 [x.com/snsf\\_ch](https://x.com/snsf_ch)

 [Linkedin.com/company/snsf](https://www.linkedin.com/company/snsf)

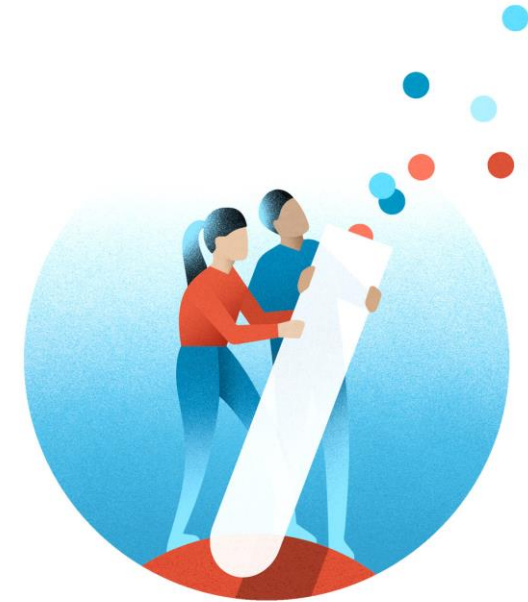
 [Instagram.com/swissnationalsciencefoundation](https://www.instagram.com/swissnationalsciencefoundation)

 [Youtube.com/SNSFinfo](https://www.youtube.com/SNSFinfo)

Check out our website: [SPIRIT](https://spirit.snf.ch)

Visit the SNSF Data Portal: [data.snf.ch](https://data.snf.ch)!

You can contact the SPIRIT team at [spirit@snf.ch](mailto:spirit@snf.ch)



# Programme

## Q&A sessions

Links available here  
[SNSF & Innosuisse funding  
scheme events \(snf.ch\)](https://www.snf.ch)

Schedule	Subjects and links for the Q&A sessions
10:30 – 11:15	<a href="#">Innosuisse Instrument – National projects</a> ↗
	<a href="#">Scientific Exchanges</a> ↗
	<a href="#">SPIRIT</a> ↗
	<a href="#">BRIDGE</a> ↗
	<a href="#">Supplementary measures</a> ↗
	<a href="#">COST</a> ↗