

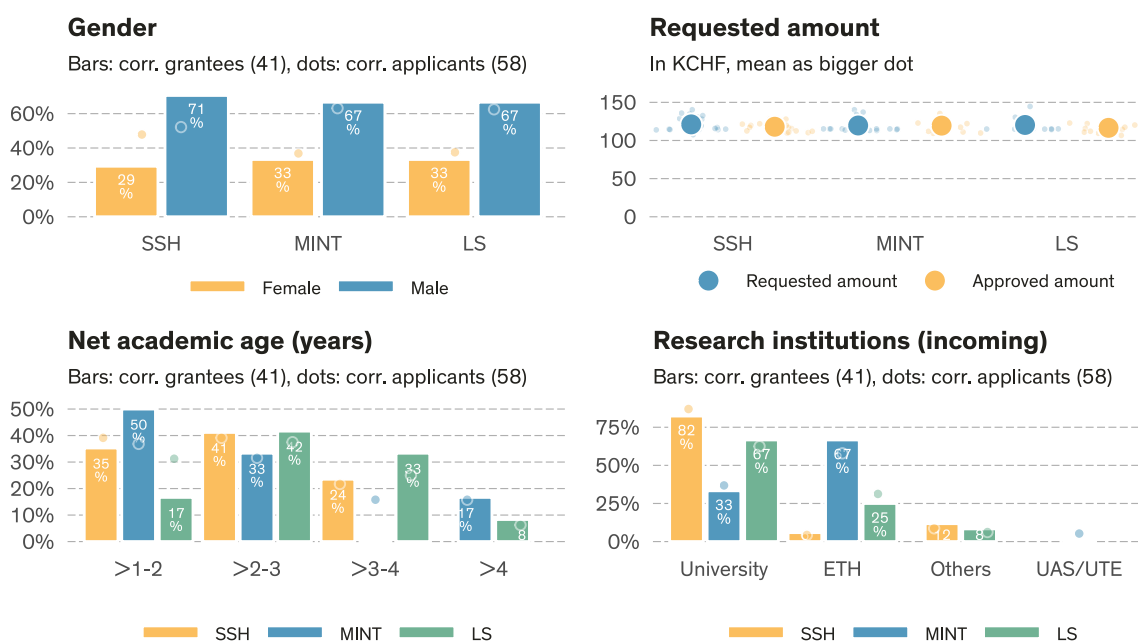
Grant summary of call deadline 2024-08-02

Return CH Postdoc.Mobility

The figures include only proposals for Return CH Postdoc.Mobility grants. The classification of research areas is based on the main discipline of the proposals. Data state **2025-01-07**¹.

	# Evaluated ^a	Approved	Req. amount	Appr. amount	Funding rate	Funding level	Success rate
SSH	23	17	2.8 MCHF	2.0 MCHF	72.0%	99.4%	73.9%
MINT	19	12	2.3 MCHF	1.4 MCHF	63.1%	100.2%	63.2%
LS	16	12	1.9 MCHF	1.4 MCHF	72.7%	96.0%	75.0%
Total	58	41	7.0 MCHF	4.8 MCHF	69.3%	98.7%	70.7%

^a Number of proposals minus known formal/substantive non-considerations and minus known withdrawal before rulings. All numbers and shares in this table are based on the number of evaluated proposals.



Approvals & rejections (call 2024-08-02)

	Total ^a	Evaluated ^b	Approved	Success rate	Subst. NC ^c	Formal NC ^c	NC ^c	Rej. after eval.
Overall								
Overall	58 (100.0%)	58 (100.0%)	41	70.7%	0 (0.0%)	0 (0.0%)	0.0%	17 (29.3%)
Gender (corr. applicant)								
Female	24 (100.0%)	24 (100.0%)	13	54.2%	0 (0.0%)	0 (0.0%)	0.0%	11 (45.8%)
Male	34 (100.0%)	34 (100.0%)	28	82.4%	0 (0.0%)	0 (0.0%)	0.0%	6 (17.6%)
Research area								
SSH	23 (100.0%)	23 (100.0%)	17	73.9%	0 (0.0%)	0 (0.0%)	0.0%	6 (26.1%)
MINT	19 (100.0%)	19 (100.0%)	12	63.2%	0 (0.0%)	0 (0.0%)	0.0%	7 (36.8%)
LS	16 (100.0%)	16 (100.0%)	12	75.0%	0 (0.0%)	0 (0.0%)	0.0%	4 (25.0%)

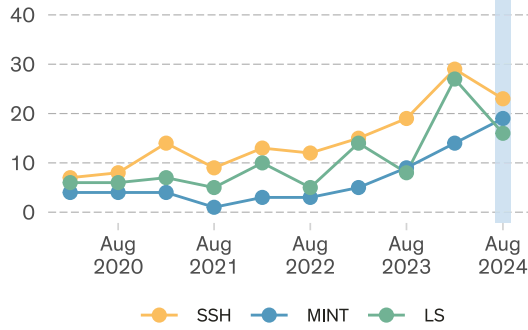
^a Total = Number of submitted proposals minus external Lead Agency and withdrawal before rulings

^b Evaluated = Total submissions minus formal and substantive non-considerations

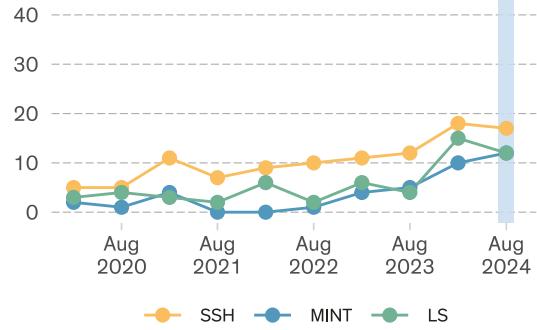
^c NC = Non-considerations

¹Calls: 'Rückkehr CH Postdoc.Mobility 2024 August'

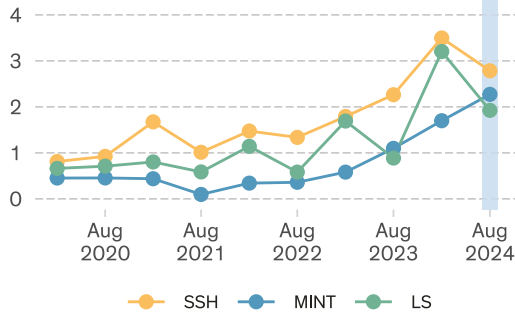
Number of proposals



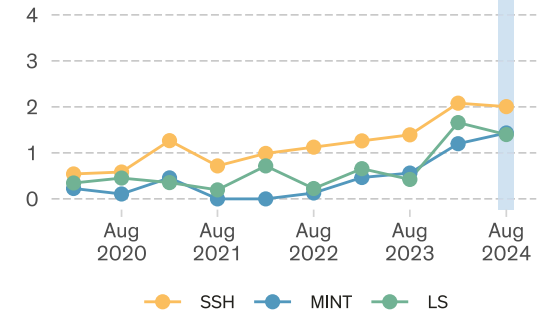
Number of grants



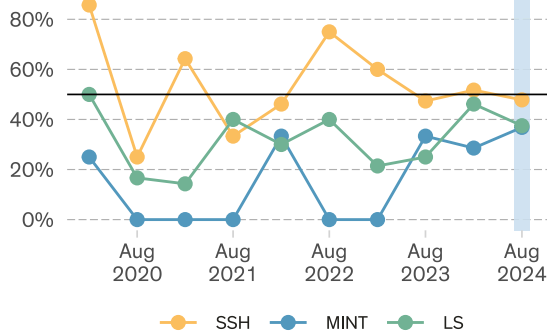
Total requested amount (MCHF)



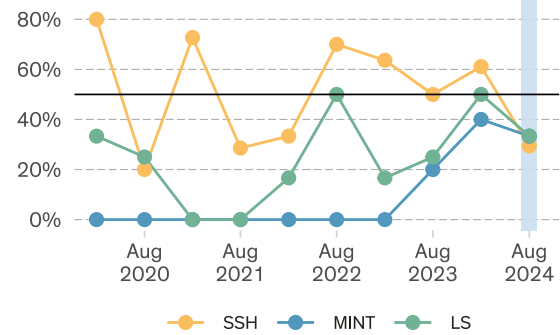
Total granted amount (MCHF)



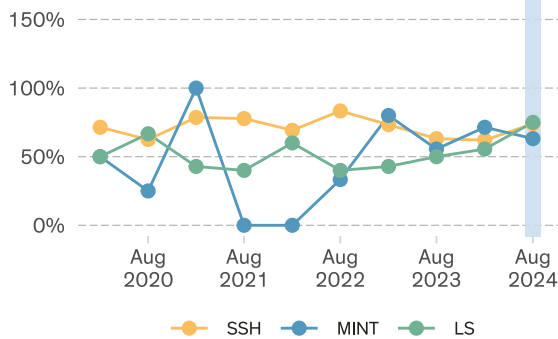
Female corr. applicants



Female corr. grantees



Success rate



Funding rate

