

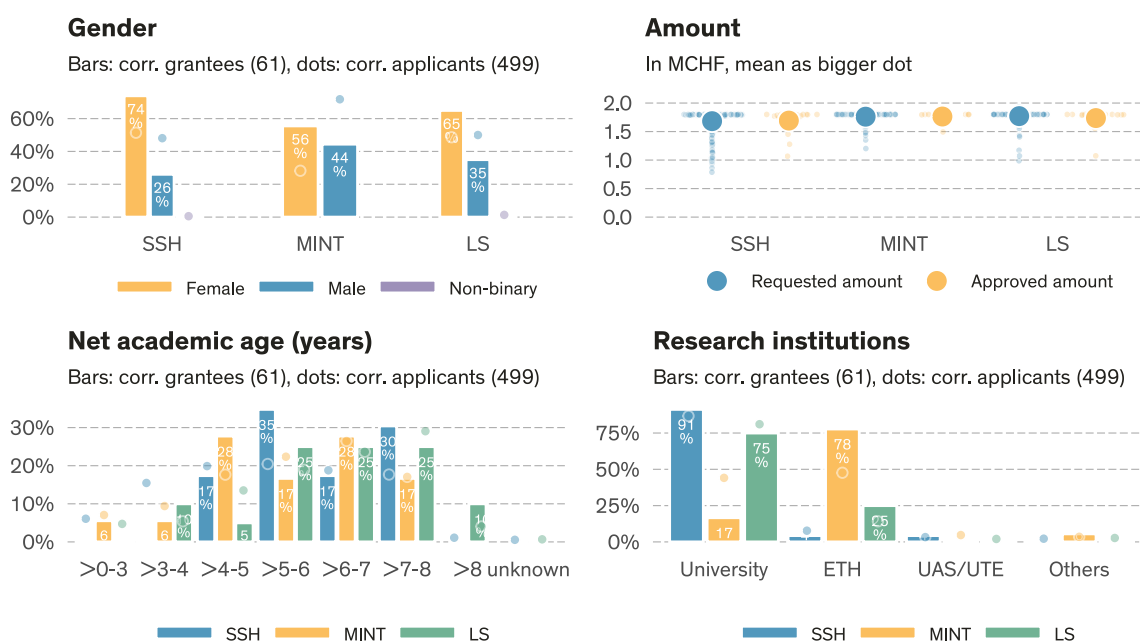
Grant summary of call deadline 2024-02-01

SNSF Starting Grants

Data state 2024-11-05¹.

	# Evaluated ^a	Approved	Req. amount	Appr. amount	Funding rate	Funding level	Success rate
SSH	181	23	304.5 MCHF	38.9 MCHF	12.8%	97.6%	12.7%
MINT	170	18	299.4 MCHF	31.8 MCHF	10.6%	99.7%	10.6%
LS	148	20	262.1 MCHF	34.7 MCHF	13.3%	97.3%	13.5%
Total	499	61	866.0 MCHF	105.4 MCHF	12.2%	98.1%	12.2%

^a Number of proposals minus known formal/substantive non-considerations and minus known withdrawal before rulings. All numbers and shares in this table are based on the number of evaluated proposals.



Approvals & rejections (call 2024-02-01)

	Total ^a	Evaluated ^b	Approved	Success rate	Subst. NC ^c	Formal NC ^c	NC ^c	Rej. after eval.
Overall								
Overall	505 (100.0%)	499 (98.8%)	61	12.2%	0 (0.0%)	6 (1.2%)	1.2%	438 (86.7%)
Gender (corr. applicant)								
Female	217 (100.0%)	213 (98.2%)	40	18.8%	0 (0.0%)	4 (1.8%)	1.8%	173 (79.7%)
Male	285 (100.0%)	283 (99.3%)	21	7.4%	0 (0.0%)	2 (0.7%)	0.7%	262 (91.9%)
Non-binary	3 (100.0%)	3 (100.0%)	0	0.0%	0 (0.0%)	0 (0.0%)	0.0%	3 (100.0%)
Research area								
SSH	186 (100.0%)	181 (97.3%)	23	12.7%	0 (0.0%)	5 (2.7%)	2.7%	158 (84.9%)
MINT	171 (100.0%)	170 (99.4%)	18	10.6%	0 (0.0%)	1 (0.6%)	0.6%	152 (88.9%)
LS	148 (100.0%)	148 (100.0%)	20	13.5%	0 (0.0%)	0 (0.0%)	0.0%	128 (86.5%)

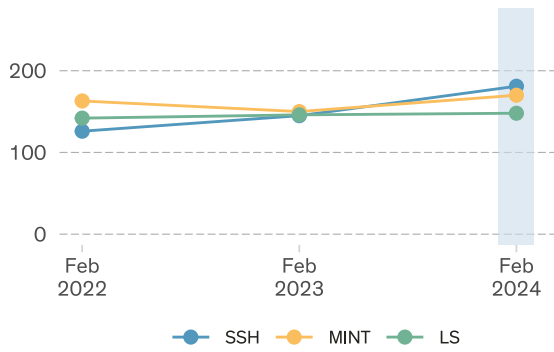
^a Total = Number of submitted proposals minus external Lead Agency and withdrawal before rulings

^b Evaluated = Total submissions minus formal and substantive non-considerations

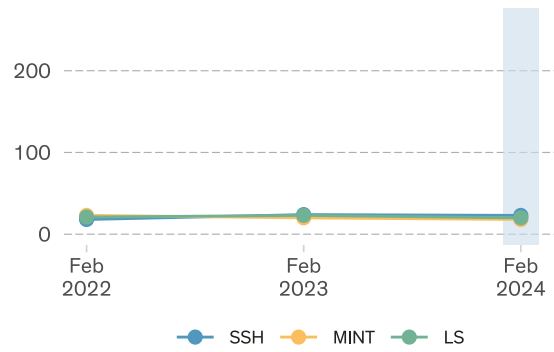
^c NC = Non-considerations

¹Calls: 'SNSF Starting Grants 2024'

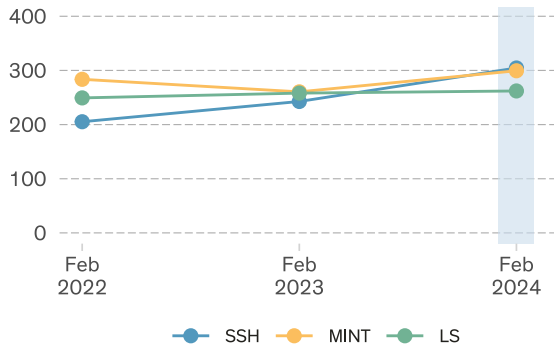
Number of proposals



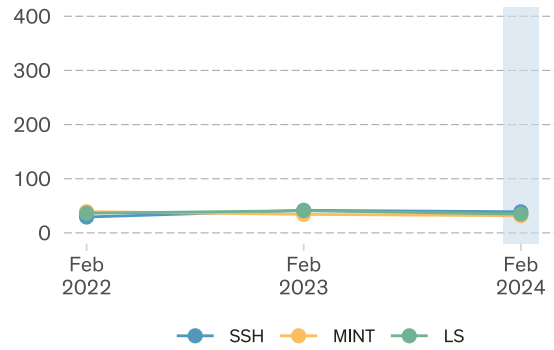
Number of grants



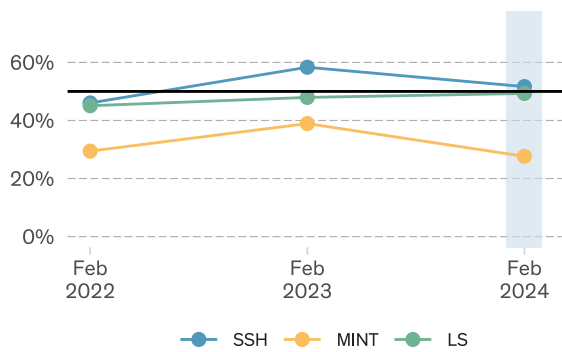
Total requested amount (MCHF)



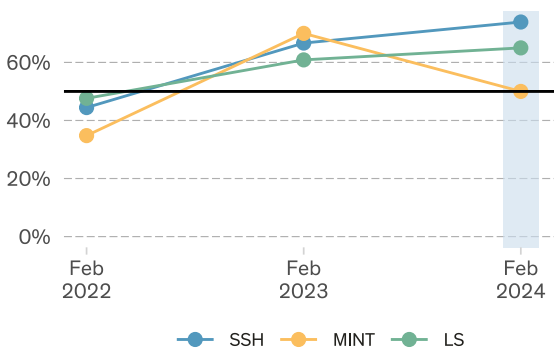
Total granted amount (MCHF)



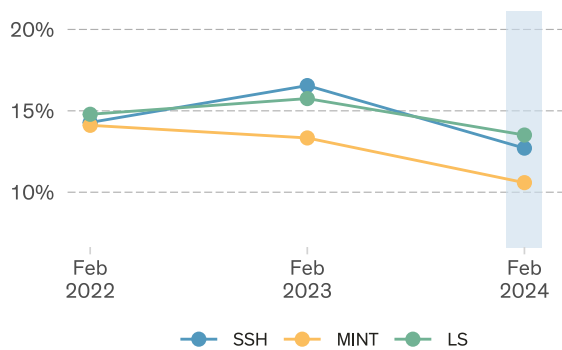
Female corr. applicants



Female corr. grantees



Success rate



Funding rate

