

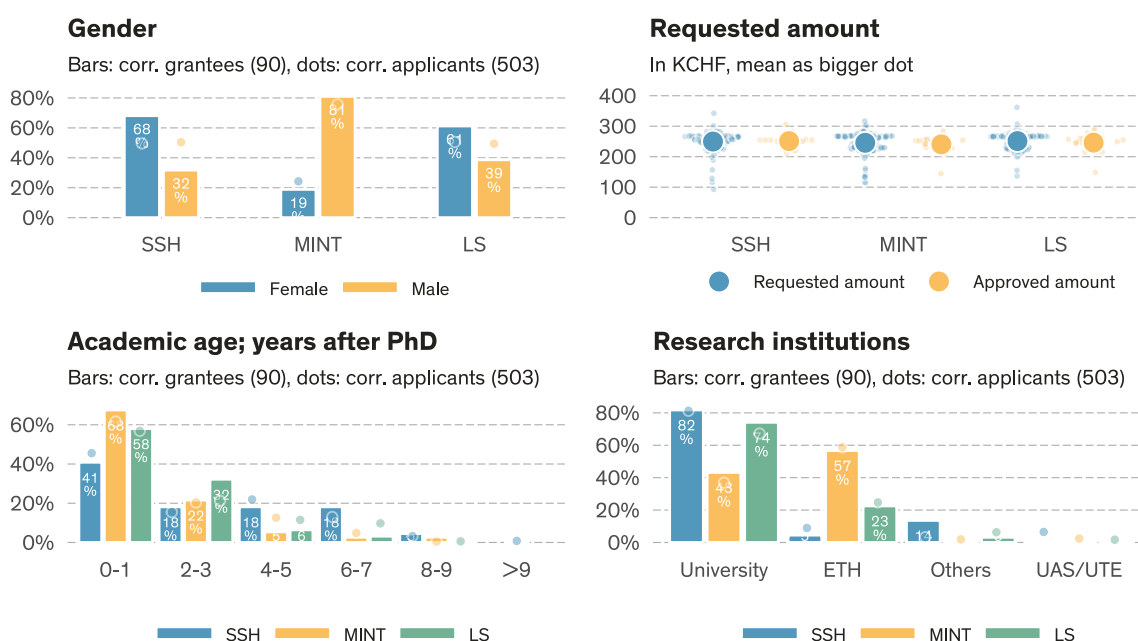
Grant summary of call deadline 2022-12-01

SNSF Swiss Postdoctoral Fellowships

Data state **2024-06-27**¹.

	# Evaluated ^a	Approved	Req. amount	Appr. amount	Funding rate	Funding level	Success rate
SSH	123	22	30.7 MCHF	5.5 MCHF	18.0%	99.6%	17.9%
MINT	206	37	50.6 MCHF	8.9 MCHF	17.6%	98.8%	18.0%
LS	174	31	43.7 MCHF	7.6 MCHF	17.5%	98.5%	17.8%
Total	503	90	125.0 MCHF	22.1 MCHF	17.6%	98.9%	17.9%

^a Number of proposals minus known formal/substantive non-considerations and minus known withdrawal before rulings. All numbers and shares in this table are based on the number of evaluated proposals.



Approvals & rejections (call 2022-12-01)

	Total ^a	Evaluated ^b	Approved	Success rate	Subst. NC ^c	Formal NC ^c	NC ^c	Rej. after eval.
Overall								
Overall	523 (100.0%)	503 (96.2%)	90	17.9%	0 (0.0%)	20 (3.8%)	3.8%	413 (79.0%)
Gender (corr. applicant)								
Female	206 (100.0%)	199 (96.6%)	41	20.6%	0 (0.0%)	7 (3.4%)	3.4%	158 (76.7%)
Male	317 (100.0%)	304 (95.9%)	49	16.1%	0 (0.0%)	13 (4.1%)	4.1%	255 (80.4%)
Research area								
SSH	128 (100.0%)	123 (96.1%)	22	17.9%	0 (0.0%)	5 (3.9%)	3.9%	101 (78.9%)
MINT	217 (100.0%)	206 (94.9%)	37	18.0%	0 (0.0%)	11 (5.1%)	5.1%	169 (77.9%)
LS	178 (100.0%)	174 (97.8%)	31	17.8%	0 (0.0%)	4 (2.2%)	2.2%	143 (80.3%)

^a Total = Number of submitted proposals minus external Lead Agency and withdrawal before rulings

^b Evaluated = Total submissions minus formal and substantive non-considerations

^c NC = Non-considerations

¹Calls: 'SNSF Swiss Postdoctoral Fellowships 2022'

